

GARDEN WALL

DIY RETAINING GUIDE



MARCH 2021

HOW HIGH

Keystone Garden Wall retaining walls can be constructed to a maximum height of 700mm, this system cannot take any loading or surcharge on the retained area behind the wall.

INSTALLATION

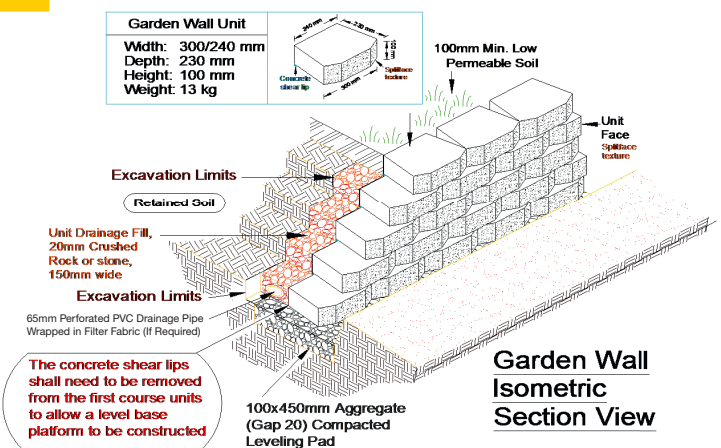
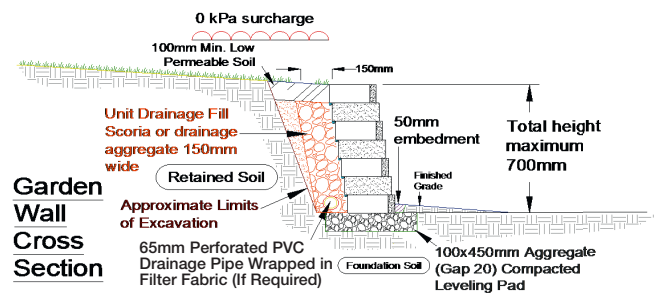
- Starting at the lowest point dig a trench 450mm wide and 100mm deep. If on sloping ground step the trench in 100mm increments. The blocks must be level, do not follow the contour of the ground
- Place 100mm GAP20 in the trench and level and compact. Ensure there is at least 50mm embedment for the Garden wall unit
- On the first course, knock the lip off the back of the Garden wall unit using a hammer and bolster. Place the blocks lip side down and level the unit front-to-back and side-to-side using a level. Use a straight edge and level to ensure alignment along the wall.
- Place a 65mm novaflow along the back of the block and cover with drainage material to 150mm from back of block
- Sweep the first course of blocks clean and place the second course in a stretcher bond pattern, ensuring the lip of the upper unit is placed over the back of the lower unit. Place drainage aggregate behind wall and backfill behind each course as required
- Continue this process until finished wall height is reached

ESTIMATING TABLE

| Wall Height | Wall Length | | | | | | |
|-------------------|-------------|----|----|----|----|-----|-----|
| | 1m | 2m | 3m | 4m | 5m | 10m | 20m |
| 0.1m (1 course) | 4 | 7 | 10 | 13 | 17 | 33 | 66 |
| 0.2m (2 courses) | 7 | 14 | 20 | 26 | 33 | 66 | 133 |
| 0.3m (3 courses) | 11 | 21 | 30 | 39 | 50 | 99 | 198 |
| 0.4m (4 courses) | 14 | 28 | 40 | 52 | 66 | 132 | 264 |
| 0.5m (5 courses) | 18 | 35 | 50 | 65 | 83 | 165 | 330 |
| 0.6 m (6 courses) | 21 | 42 | 60 | 78 | 99 | 198 | 396 |



- Medium sized block, approx. 13kgs
- Build straight, curved or terraced walls
- Very simple to install, 3.3 units per lineal meter or 33 units per m2



Before installation, if you have any concerns or questions please make contact with your local Firth representative or call 0800 800 576.