



FIRTH CERTIFIED CONCRETE DELIVERY GUIDE

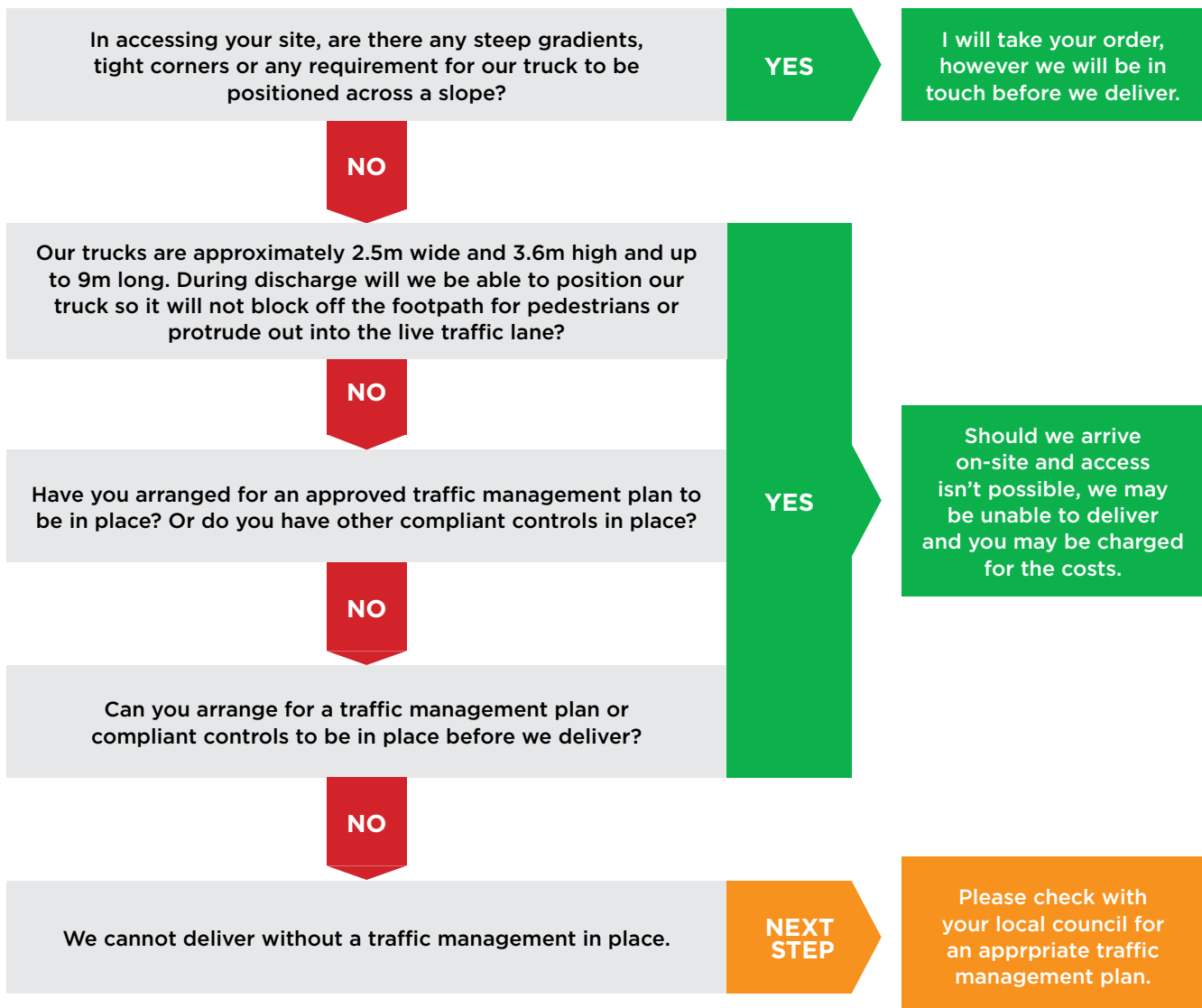


WITH THE LARGEST FOOTPRINT OF READY-MIXED CONCRETE PLANTS ACROSS NEW ZEALAND, FIRTH CERTIFIED CONCRETE® FAVOUR A LOCALISED STRATEGY. IN EACH REGION, OUR TEAM OF DEDICATED PRODUCTION, DISPATCH, ENGINEERS AND SALES PROFESSIONALS ARE HERE TO SUPPORT YOUR CONCRETE NEEDS AND DELIVER THE BEST TECHNICAL SOLUTION FOR YOUR PROJECT.

THE FOLLOWING STEPS ARE DESIGNED TO ASSIST AND SUPPORT OUR CUSTOMERS IN PREPARING THEIR SITE FOR A SAFE DELIVERY OF FIRTH CERTIFIED CONCRETE®.

SITE DELIVERY

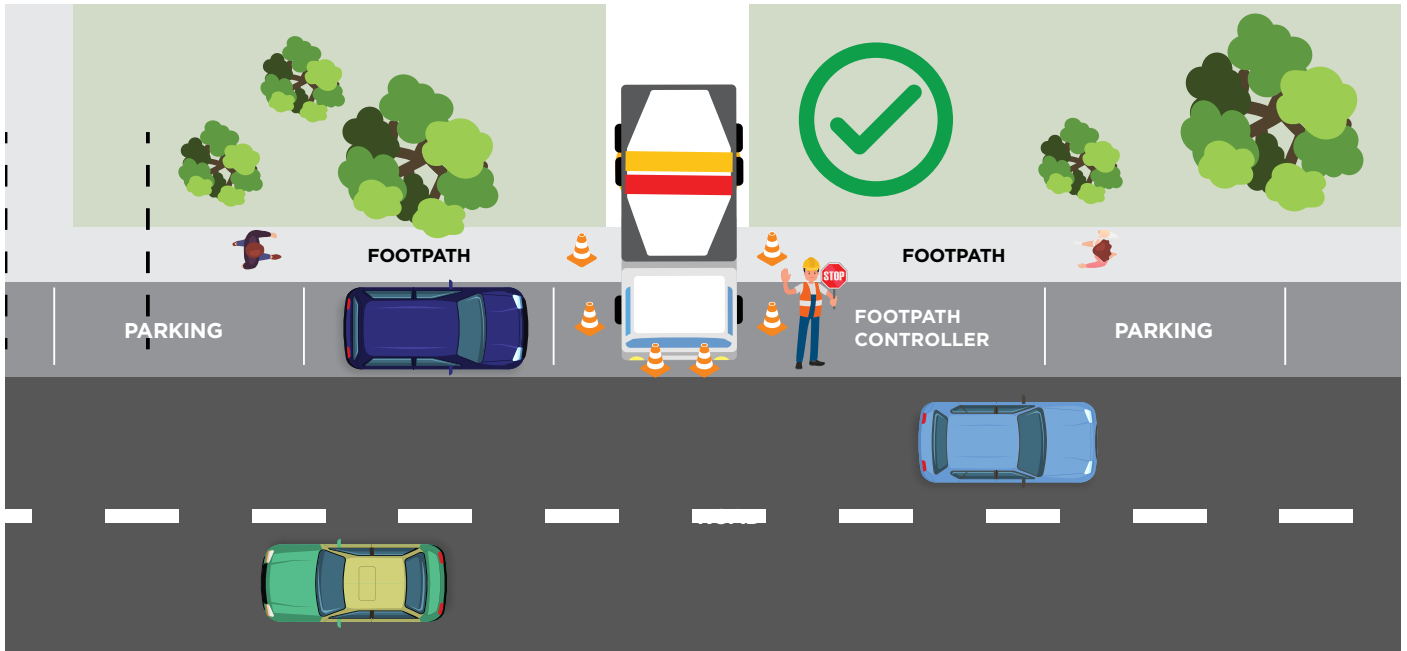
BELOW ARE SOME ESSENTIAL ACCESS AND TRAFFIC MANAGEMENT RELATED QUESTIONS WHILE ORGANISING THE SITE FOR DELIVERY



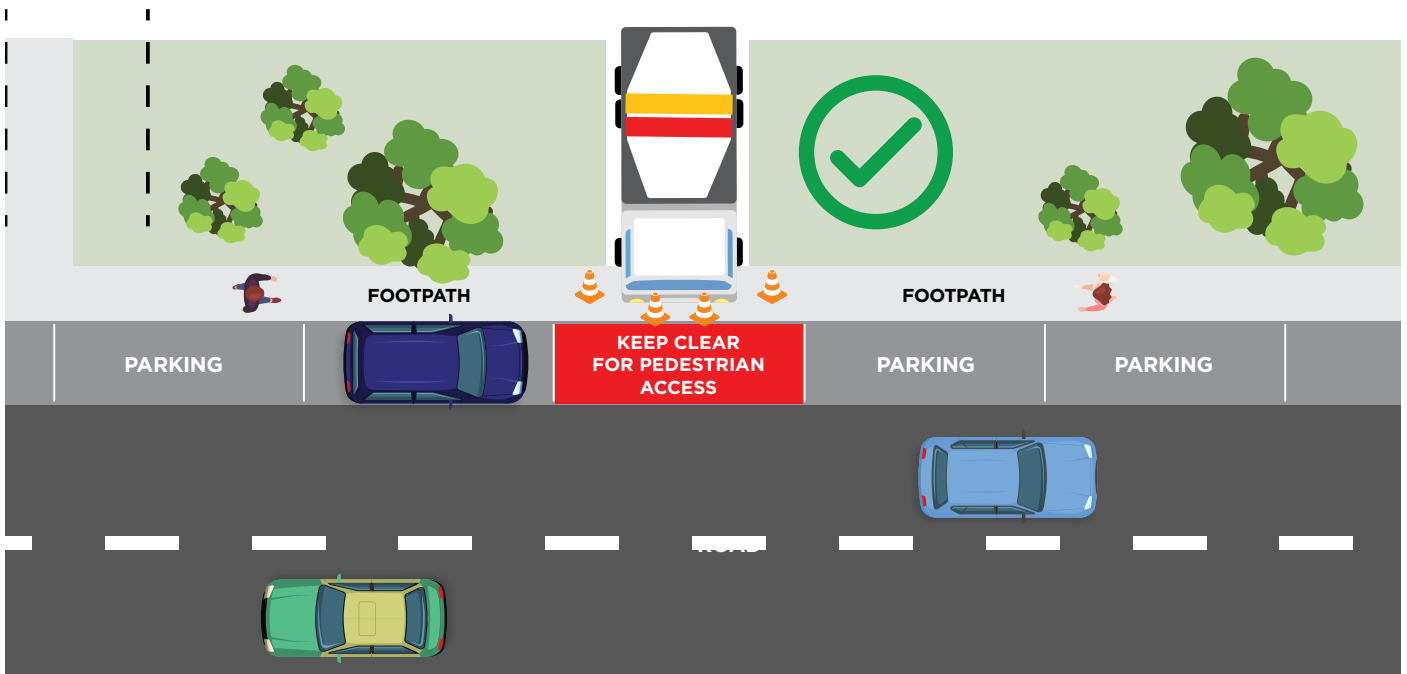
TRUCK POSITIONING

THE DIAGRAMS BELOW ARE EXAMPLES OF GOOD POSITIONING PRACTICE. IF ONE OF OUR TRUCKS IS PARKED IN A PLACE WHERE THEY WILL BLOCK SOME OR ALL OF THE FOOTPATH.

IF CONCRETE TRUCK IS FULLY BLOCKING FOOTPATH AND PARKING AREA REQUIRES A FOOTPATH CONTROLLER

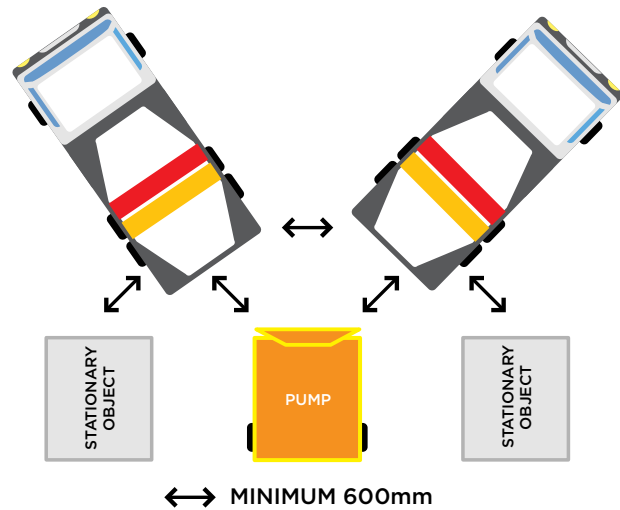
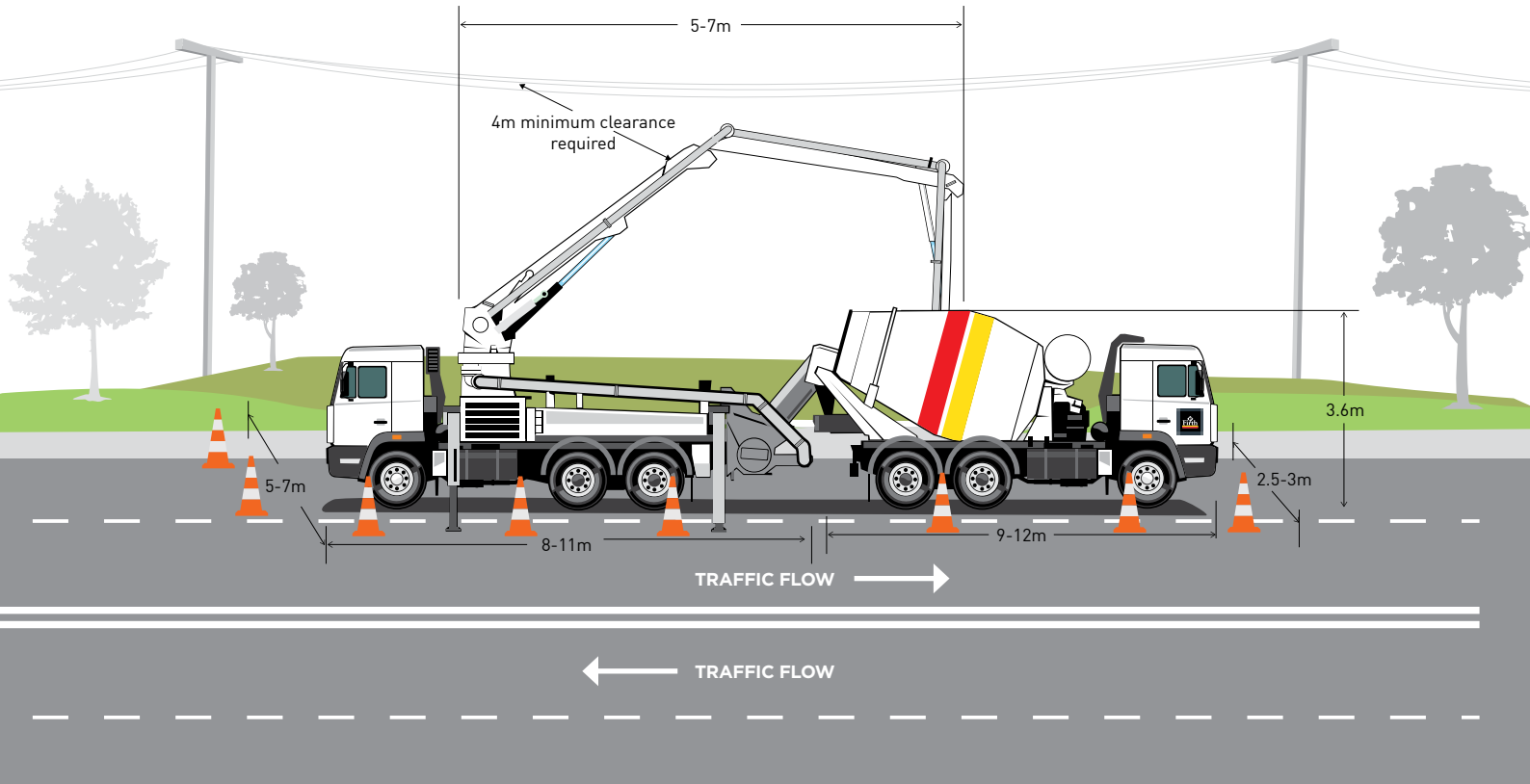


IF CONCRETE TRUCK IS PARTIALLY BLOCKING THE FOOTPATH



CONCRETE PUMP CHECKLIST

CHECK WITH YOUR PUMPING COMPANY THAT ACCESS IS ADEQUATE (AS PUMP SIZES ALSO VARY) AND THAT NO OTHER RISKS EXIST; POWER LINES, TRENCHES, SOFT GROUND, TRAFFIC ETC...



CONCRETE PUMP RISKS:

- BLOWBACK
- UNDER PRESSURE HOSES & CLIPS
- BOOM FATIGUE
- TRUCK LEGS ON UNSTABLE GROUND

- | | | |
|---|--|---|
| <input type="checkbox"/> All safety features fitted and used, including grates in place, earth straps used, safety chains on hopper discharge elbow, etc. | <input type="checkbox"/> Where two trucks are required, adequate space. (600mm minimum) between the trucks and other stationary objects. | <input type="checkbox"/> The pump hopper should be at a height that allows gravity flow of concrete into the hopper. |
| <input type="checkbox"/> All safety features are fitted and used on concrete skips. | <input type="checkbox"/> Maintain a full hopper on the pump to avoid blow back due to air locks. | <input type="checkbox"/> It is requested that the pump is set up on site so that concrete trucks do not have to breach traffic regulations to reverse up to the hopper. |
| <input type="checkbox"/> A spotter to assist in reversing onto a pump. | | |

PLEASE NOTE:

No Blowback concrete will be accepted into concrete trucks.
It is your responsibility to ensure that you have ordered the right mix for your desired application and delivery. Structural and No Fines mixes are not suitable for pumping.

ENVIRONMENTAL IMPACT

WET CONCRETE IS A HAZARDOUS SUBSTANCE. PRIOR TO DELIVERY, ENSURE THAT THERE IS APPROPRIATE CONTROLS AT ROAD SIDE DELIVERY POINTS:

- Schedule delivery times to prevent noise nuisance to neighbours of the site.
- Dedicate an area for safe, level and contained areas for concrete truck wash down.
- Truck wash water must be collected or diverted to grass or bare soil that you control.
- Ensure appropriate controls are in place to prevent trucks taking mud from sites onto surrounding roads.

Lime dissolves in water to produce a highly alkaline solution that will burn and kill fish, insects and plants. Never allow concrete waste water or slurry to enter storm water drains. Contain any spill and prevent it from entering drains, sewers and water ways. Should concrete slurry or waste water enter a drain or water way call your local authority immediately.



0800 CONCRETE
FIRTH.CO.NZ

