

X[®] RIBRAFT[®]
X-POD[®]



MARCH 2019

RibRaft™

RibRaft™

RibRaft™

T H E F U T U R E O F F O U N D A T I O N S

X® RIBRAFT®
X-POD®



THE GAME CHA

Around 20 years ago Firth was the pioneer of 'Ribraft' floors in NZ - they became the most popular foundations in the country. And now we're doing it again with X-Pod®. X-Pod® is the next generation of Firth RibRaff® foundations and just like the original, this one is going to be a game changer.

ECO FRIENDLY + USER FRIENDLY

RibRaff® X-Pod® offer designers, installers and homeowners a more sustainable foundation option.

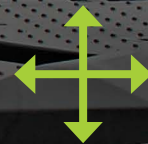
NGER



100%
RECYCLABLE



CONSTRUCTED FROM
RECYCLED MATERIAL



EFFECTIVE IN EXPANSIVE
SOILS WHERE STRENGTH
AND STIFFNESS IS KEY

BENEFITS



EASILY TRANSPORTED

Pods for an 180sqm home can be delivered on a single axle trailer



LIGHTWEIGHT
+ EASY TO HANDLE

PODS WEIGH
LESS THAN

3

KG
PER UNIT



ADJUSTABLE
X-POD® SYSTEM FITS
ANY SIZE FOUNDATION
& INTEGRATES AROUND
SERVICES WITH EASE

CLEAN SITE

X-POD® SYSTEM IS
100%
POLYSTYRENE FREE



RIBRAFT® X-POD® 750

Made from 80% recycled polypropylene. Each individual 750 X-Pod® can be arranged in a grid creating concrete ribs at 750mm centres.



RIBRAFT® X-POD® 1500

Made from 80% recycled polypropylene. Connect 4 x 1500 X-Pod®s together, using the keystone clips, forms a grid that creates concrete ribs at 1500mm centres.



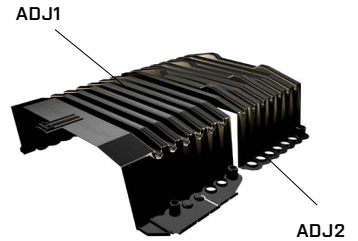
X-POD® KEYSTONE CLIP

Clicks and locks X-Pod®s together. Clicks and secures reinforcing steel. 170 x 170 x 100mm.



ADJUSTABLE X-POD® EXTENDER

Available in 2 sizes ADJ1 & ADJ2 Adjustable extenders remove the need to cut the X-Pod®s. Simply by attaching ADJ1, an adjustment of 150-400mm can be made, which can be further extended to 450mm - 700mm by the addition of the ADJ2 extender.



X-POD® CONCRETE

X-Pod® foundations require a specific Firth designed concrete. Two mixes are available, Firth 'IP2019X' a 20MPa, 120mm slump mix, or Firth 'IP2519X' a 25MP, 120mm slump mix. Both are available in a 13mm or 19mm aggregate, are suitable for 100mm pump lines and are Declare Label certified, available nationwide at Firth plants.



STEEL REINFORCING / MESH

(not supplied by Firth)



TO ENHANCE THERMAL R-VALUE, THESE COMPONENTS CAN BE INCLUDED IN FOUNDATION DESIGN:



THERMOX TAPE

50m roll (optional) Reflective Thermal DPM tape



THERMOX DPM

90sqm roll (optional) Reflective Thermal DPM



X-POD® SYSTEM INSTALL

1

SCRAPE AND
LEVEL SITE



2

BOXING



3

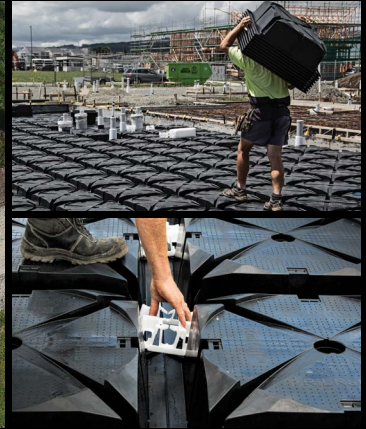
PLASTIC
SHEETING



VIEW THE
INSTALL VIDEO
AT XPOD.CO.NZ

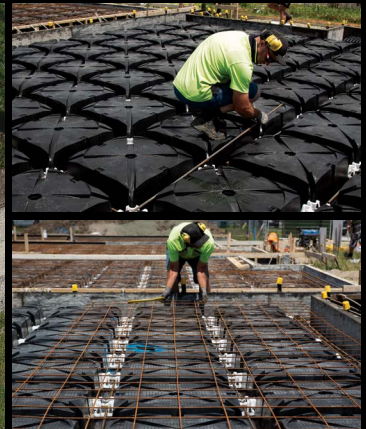
4

X-PODS,
KEYSTONE CLIPS,
EXTENDERS
INTO PLACE



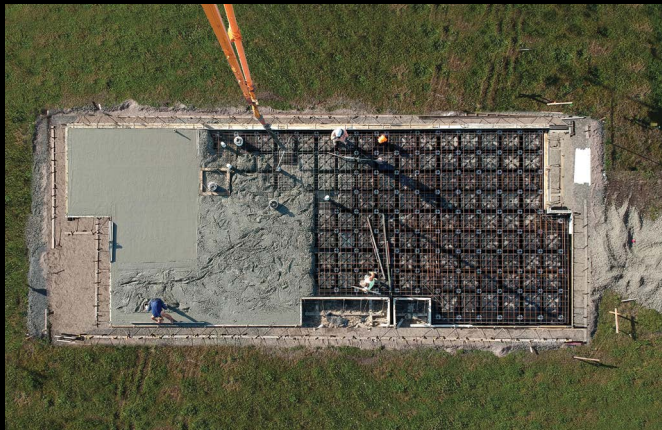
5

STEEL & MESH
CONNECT TO
KEYSTONE CLIPS



6

CONCRETE
POUR



1 WHAT IS X-POD®

- > RibRaft® X-Pod® is a unique, patented foundation system from Firth.

2 CAN I SWITCH OUT MY EXISTING RIBRAFT® FLOOR TO A X-POD® FLOOR?

- > Yes you can, however you will need to get an engineer to design the floor specifically as a X-Pod®.

The X-Pod® Structural Designers Guide is available online at www.xpod.co.nz

3 HOW DOES X-POD® COMPARE IN COST TO CURRENT RIBRAFT® FLOOR?

- > In good ground it may be 5-10% more than a standard RibRaft®.

However as ground conditions deteriorate, ie TC2 / expansive soils or when building loads increase, it is likely to be less expensive than competing systems (eg pile foundations).

4 CAN I USE NORMAL CONCRETE OR DOES IT NEED A SPECIAL MIX?

- > X-Pod® foundations require a specific Firth designed concrete. Two mixes are available, Firth 'IP2019X' a 20MPa, 120mm slump mix, or Firth 'IP2519X' a 25MPa, 120mm slump mix. Both are available in a 13mm or 19mm aggregate, are suitable for 100mm pump lines and are Declare Label certified, available nationwide at Firth plants.

5 IS IT QUICKER AND EASIER TO INSTALL?

- > Yes, it is quicker and easier to install than a standard RibRaft® floor.

6 DOES X-POD® USE MORE/LESS CONCRETE?

- > Often slightly less.

7 CAN X-POD® BE USED ON A SLOPING SITE?

- > X-Pod® can be used on sloping ground with the engineer's approval.

8 CAN YOU STACK THE PODS?

- > Your Pods can be stacked for delivery. An average houseslot site will fit on a tandem trailer.

9 CAN I HAVE A DECORATIVE CONCRETE FINISH WITH X-POD®?

- > Yes you can, the Firth 'IP2019X' or 'IP2519X' mix can be polished or coloured.

Note: When polished, there will be no problems with polystyrene beads on surface.

10 IS THE SYSTEM CODEMARK CERTIFIED?

- > It's likely to be Codemark certified in the next 12-24 months.

11 WHAT IS THE R-VALUE?

- > R1.3 however in some instances designers may wish to determine the R value as part of the design process. (Refer Page 12 of the X-Pod® Structural Designers Guide to calculate R-value.)

Ribraft HotEdge® can be added to increase R-Value, if required under Homestar 6.

Thermo-X DPM can be used to increase the R-Value in accordance with page 12 of the Design Guide.

For RibRaft® HotEdge® information visit www.firth.co.nz/residential/foundations/ribraft-hotedge

12 DOES THE X-POD® SYSTEM CARRY ENVIRONMENTAL CERTIFICATION?

- > Yes the Firth X-Pod® 'IP2019X' or 'IP2519X' concrete is Declare Label certified (FIR002 Declare Label), which is available nationwide at Firth plants.

Under Homestar (Version 4), Declare concrete receive 0.5 merits when 50% of the concrete is Declare Label Certified.

The X-Pod® plastic pods and components are not currently Declare Label Certified. (Declare Labels are like a nutrition label for the building industry, they clearly state what ingredients make up a product and are designed to help shape a greener, healthier environment.)

Declare.

13 CAN THE PODS BE RECYCLED?

- > The X-Pod® plastic pods are made from 80% recycled plastic and are fully recyclable. (Check with your local council for current recycle regulations.)

PP



Polypropylene

14 IS THE X-POD® SYSTEM AVAILABLE THROUGHOUT NEW ZEALAND?

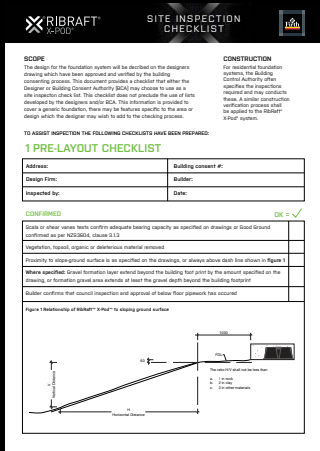
- > X-Pod® is available across most of NZ, however in some parts of the country, X-Pod® isn't available including Kaitaia, Wairarapa, Kaikoura, Motueka and Golden Bay, where there is no Firth Plant or a Firth Plant is too far away to make the supply of X-Pod® concrete feasible. In these cases, please talk to your local Firth rep for more information and to discuss a suitable alternative foundation design.



X-Pod® Designers Guide

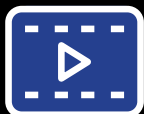


X-Pod® Installation Guide



X-Pod® Site Inspection Checklist

AVAILABLE AT XPOD.CO.NZ



VIEW THE
INSTALL VIDEO
AT XPOD.CO.NZ





0800 FIRTH 1
XPOD.CO.NZ

Firth is a member of NZGBC, call us for more information about how our products can assist in achieving Green Star and Homestar points. ©Firth Industries 2018. All rights reserved. Content in this document is protected under the Copyright Act 1994. No material may be reproduced in whole or in part without the written consent of the copyright holder.

