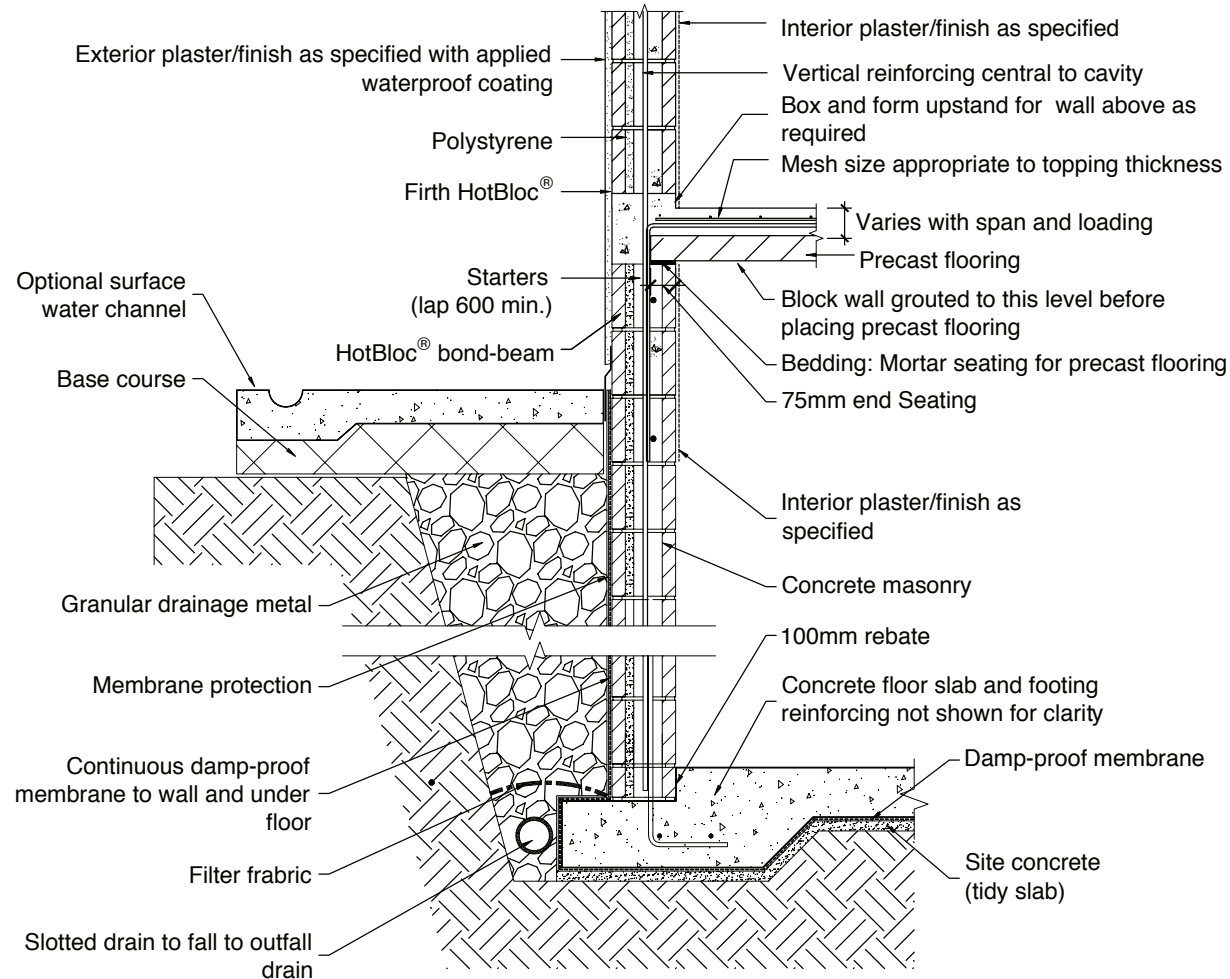


Basement


Detail:104_basement



Notes:

- Refer to NZS 4229 or specific design for masonry wall reinforcement details.
- Refer to specific design for dimension & reinforcing of RibRaft® floor system.
- Refer to CCANZ CP.01:2011 for situations where a floor rebate is required.
- If a rebate is required increase footing width to block width +150mm.

Note: refer to NZS 4229 or specific design for masonry reinforcing

	Firth HotBloc® Basement	<p>Disclaimer: This information is intended solely as a guide for use of Firth products. Before using a Firth product you should ensure that the product is suitable for use in the specific application. Nothing in this information constitutes a statement of fitness for particular purpose - appropriate expert advice should always be obtained. Firth makes no warranty regarding the use of this information with non-Firth product.</p>	© 2009 . The copyright of this document is the property of Firth and shall not be reproduced, copied, loaned or disposed of directly, or indirectly, nor used for any purpose other than that for which it is specifically furnished without prior consent.	www.firth.co.nz Scale 1:20 February 2009
	For Technical Advice: Ph. 0800 800 576			104_basement.dwg